



Fencing System
LINKLAND®



Anping Linkland Wiremesh Products Co., Ltd.



PALISADE FENCE

www.chinafencewiremesh.com

E-mail: Sales@chinafencewiremesh.com

"The best security solution for intruders preventing"



For over 20 years, Linkland Fence has been offering the strong and durable palisade fencing products to a wide range of places. We are specialized in general palisade fencing and security palisade fencing producing and exporting, and our products are widely used for residence fencing, factory fencing, road fencing and so on. Advanced production equipment, skilled workers, professional sale representatives and considerate after sale service contribute our high quality products and long term cooperation with our customers.

Palisade fencing can be divided into general palisade fencing and security palisade fencing according to the different specifications. General palisade fencing is shorter than security palisade fencing, which has angle type and corrugated type; but security palisade fencing has only corrugated type. With high strength, sharp prongs and narrow pale spacing, the steel palisade fencing can achieve high level of security to prevent intruders. It's widely used for church fencing, residence fencing, factory fencing, road fencing and so on.

Compared with chain link fence and welded wire fence, palisade fencing has higher strength, and it's more impossible to climb or break in short time. Besides, with various bright colors and various pale types, steel palisade fencing can provide perfect aesthetic effect for customers.

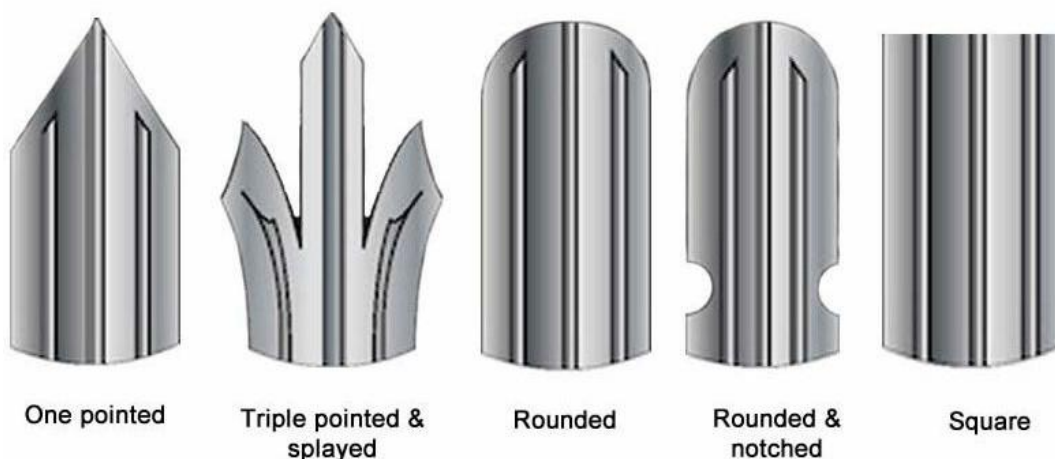
Feature of palisade fencing

- High strength and high security.
- Anti-climb with narrow pale spacing and sharp prongs.
- Various colors for perfect aesthetic effect.
- Corrosion and rust resistance.
- Easy installation and maintenance.
- Durable and long service life.

Specification of palisade fencing

- **Material:** low carbon steel, stainless steel.
- **Surface treatment:** galvanized, powder coated.
- **Common color:** white, black, green, yellow, blue, red.
- **Fence panel length (post center):** 2.75 m.
- **Maximum pale spacing:** 155 mm for corrugated pales; 135 mm for angle pales.
- **Corrugated pale type:** W section pale, D section pale.
- **Fence gate:** single leaf gate or double leaves gate.
- **Accessories:** fishplates, post clamps, post bracket, bolts and nuts.

Head types of W & D Section Pales



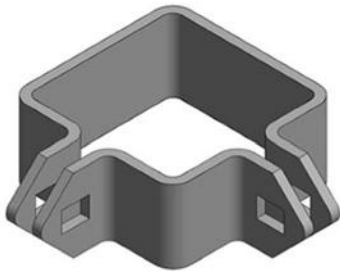
One pointed

Triple pointed & splayed

Rounded

Rounded & notched

Square



Corner post clamp



Corner palisade fishplate



Bolts and nuts

Table 1: Dimensions of General Palisade Fence and Security Palisade Fence

Item	Fence Height Above Ground (m)	Posts		Horizontal Rails (Rolled Steel Angle Section) (mm)	Pales		Type
		Rolled Steel Joist Section (mm)	Embedded Length (mm)		Angle (mm)	Corrugated Sheet Thickness (mm)	
GPF-01	1.5	102 × 44	525	40 × 40 × 4	40 × 40 × 5	see table 2	general palisade fence
GPF-02	1.8	102 × 44	525	40 × 40 × 4	40 × 40 × 5		
GPF-03	2.1	102 × 44	625	45 × 45 × 4	40 × 40 × 5		
GPF-04	2.4	102 × 44	725	45 × 45 × 4	40 × 40 × 5		
SPF-01	3.0	127 × 76	925	50 × 50 × 6	-	see table 2	security palisade fence
SPF-02	3.6	127 × 76	1125	75 × 50 × 6	-		

Table 2: Thickness of Palisade Fencing Pale

Item	Pale Profile	Type	Thickness (mm)
PFP-01	corrugated "W" section	general palisade fencing	2.5
		security palisade fencing	3.0
PFP-02	corrugated "D" section	general palisade fencing	3.0
		security palisade fencing	3.9

Table 3: Holes for Palisade Fencing Post Foundations

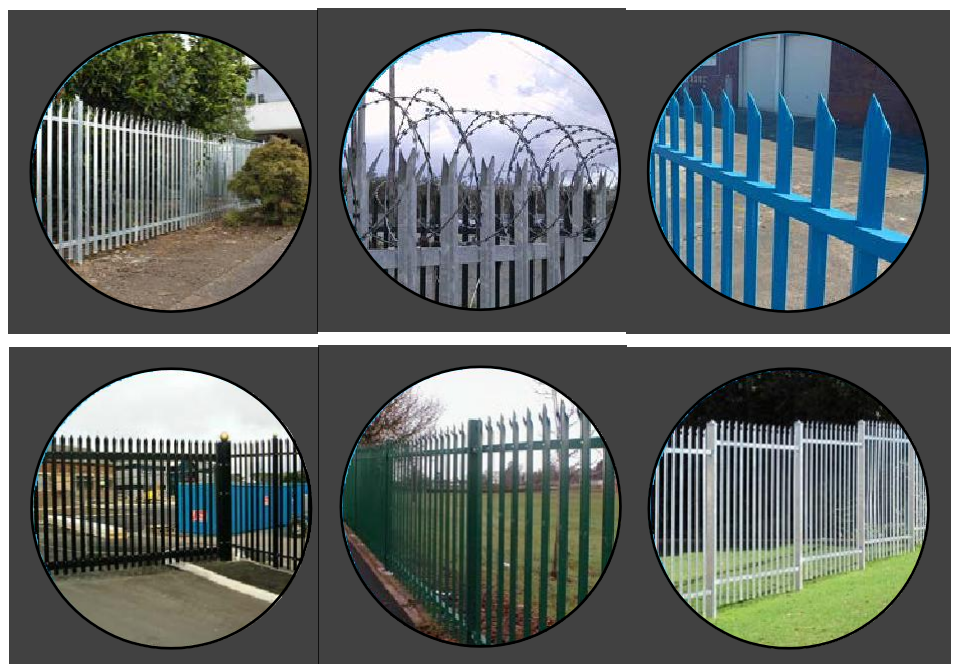
Item	Fence Height Above Ground Level (m)	Minimum Plan Dimensions		Type
		Square Hole (mm)	Round hole (mm)	
FPF-01	less than 2.4	350 × 350	450 diameter	general palisade fencing
FPF-02	2.4	350 × 350	450 diameter	
FPF-03	3.0	450 × 450	600 diameter	security palisade fencing
FPF-04	3.6	450 × 450	600 diameter	

Table 4: Components of Steel Palisade Fencing

Components	Types	Quantity Per Panel
Pale	W section, D section or angle pale	17
Post	RSJ post or square post	1
Rail	rolled steel angle	2 or 3 according to fence height
Fitting	straight fish plates or post clamps	2
	bolts and nuts	38

Application

- School fencing.
- Park fencing.
- Church fencing.
- Stadium fencing.
- Residence fencing.
- Yard fencing.
- Factory fencing.
- Farm fencing.
- Railway fencing.
- Highway fencing.
- Road fencing.
- Facilities fencing.
- Plant fencing.
- Construction site fencing.
- Development zone fencing.



How to install palisade fencing effectively?

- **Step 1**

Before you start continuous installation, determine the exact location of your first post and dig a hole of the size about 350 mm (length) × 350 mm (width) × 600 mm (height) or other sizes according to your post height.

- **Step 2**

Lay the first post in the hole; make sure the post is straight and upright. Then pour the mixed concrete in and wait for concrete drying.

- **Step 3**

Once the concrete is dry, start the continuous installation as follow: Dig the second hole according to the length of palisade rails you intend to place between them.

- **Step 4:**

Fasten the palisade rails from the first post to the second one. Once the second post is fixed correctly and upright, meanwhile, the horizontal palisade rails are in level, pour concrete in. In this way, the post distance is always right, no need of post adjustments any more.

- **Step 5**

Assemble palisade pales to the horizontal rails in conjunction with bolts and nuts. Make sure the head of bolts are fixed in the front of the panel and the pales are vertical against the palisade rails.

- **Step 6**

Repeat this way, until your palisade fencing is finished.

Why our products are popular?

-
- **High strength and security**
Steel palisade fencing ,made of high quality steel, features the narrow pale spacing and sharp prongs, which can greatly prevent intruders and protect premises .
- **Various types and sizes**
Our company can supply palisade fencing of different specifications: general palisade fencing and security palisade fencing products. In addition, we can also supply various fence fittings for customers, such as fish plates, post clamps, post bracket, bolts and nuts.
- **Weather resistant surface**
With galvanized or powder coated surface treatment, our metal palisade fence products are corrosion, rust resistant and have long service life.

- **Beautiful appearance**

We can provide palisade fencing products with various colors and top shapes. The common colors are white, gray, black, yellow, green, blue, red, and the common top shapes are "W", "V" or "D". They all have good aesthetic effects.

- **Wide applications**

With all the advantages mentioned above, our steel palisade fencing products are popular for residence fencing,

"W" section palisade fencing VS "D" section palisade fencing

Generally speaking, our high palisade fencing tends to be W-section pales with triple head style, while D-section palisade pale is designed for medium to low security fencing.

Hot products

- General palisade fencing with angle pales.
- Security palisade fencing with corrugated pales.
- High security palisade fencing with 3.6 m height.
- Galvanized steel palisade fencing.

Our services

- Metal palisade fencing with gate.
- Free consultation service.
- Strict inspections during production and before delivery.
- After sale service.

Information supplied by the purchaser

The following information shall be supplied by the purchaser at the time of inquiry or order:

- Type.
- Size.
- Surface treatment.
- Color.
- Quantity.

PALISADE FENCE

Anping Linkland Wiremesh Products Co., Ltd.



Add: No.69-70 The Filter Industrial Part of Anping ,Hebei, China P.O 053600

Call Us :+ 86 180 3388 9188

E-Mail : Sales@chinafencewiremesh.com

F-www.chinafencewiremesh.com



Fencing System
LINKLAND®